

CERTIFIED LAND CORNER RECORDATION

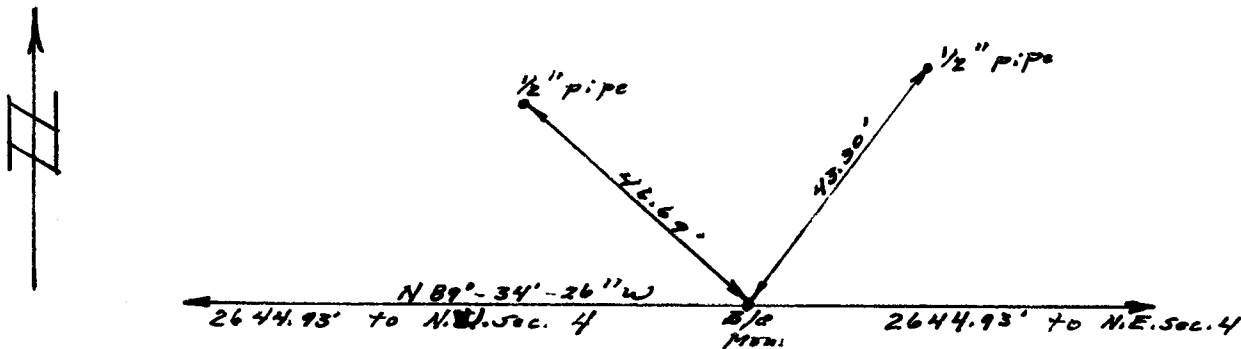
LOCATION	DESCRIPTION OF CORNER EVIDENCE FOUND, AND ORIGINAL RECORD (If known)
	Found nothing at corner.
33 T 20 N ¼ Cor. 4 T 19 N R 66 W 6th P.M..	Corner re-established by single proportion. G.L.O. record - sandstone 16" x 10" x 4".

DESCRIPTION OF MONUMENT AND ACCESSORIES ESTABLISHED TO PERPETUATE THE ORIGINAL LOCATION OF THIS CORNER:

Set 3" brass cap on 2" pipe, ^{30"} long, set in concrete. Stamped as shown under location, above, plus LS 495.

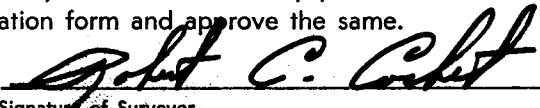
Set ½" pipe for witness corners to northeast and northwest. See sketch.

SKETCH, WITH COURSE AND DISTANCE TO ADJACENT CORNER IF DETERMINED IN THIS SURVEY.
(May Sketch or Paste Reproduction on Reverse Side.)




Bearing by solar observation.

I, Robert C. Corbet certify that I have carefully performed or reviewed the work done on the diagrammed corner as reported on this recordation form and approve the same.


 Signature of Surveyor L.S. 495
Registration No.

STATE OF WYOMING,
Office of Clerk and Recorder,
County of Taramie

This "corner record" was filed for record on the 6 day of January, 1975, was noted on the cross-index plat and is assigned page No. _____, in book No. _____.


 County Official

Cross Index No. <u>A 11</u>	T. <u>T 19</u>	R. <u>66</u>	<u>6</u> Mer.
_____	T. _____	R. _____	Mer.
_____	T. _____	R. _____	Mer.
_____	T. _____	R. _____	Mer.
_____	T. _____	R. _____	Mer.
_____	T. _____	R. _____	Mer.
_____	T. _____	R. _____	Mer.

Photographed

Indexed

Posted

Assessor

The State of Wyoming }
County of Laramie } SS

This instrument was filed for record
at 1:28 o'clock P. M. on the
6 day of January,
A. D. 19 21 and duly recorded in
Book _____ on page _____

J. W. C. [Signature]

County Clerk & Ex-Officio Register of Deeds
by *[Signature]* Deputy

[Faint handwritten mark]